

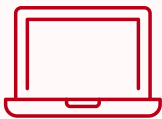


# SHE-COVERY SERVICES

We help transition newcomer women from unemployment or underemployment conditions into job market opportunities.



**Employment & Career Support**



**Essentials Skills Training**



**Mental Health Support**

## **Who Should Apply:**

- Self-identify as a woman
- Permanent Resident
- Landed Immigrant
- Protected Person
- Convention Refugee
- Live-In Caregiver

## **Contact:**

**Farahnaz Otak**

Employment Counsellor

**647-812-1332, ext. 5274**

**fotak@mnlct.org**

230123

Find out more:  
**[mnlct.org/she-covery](https://mnlct.org/she-covery)**